

# DC EXHIBIT D

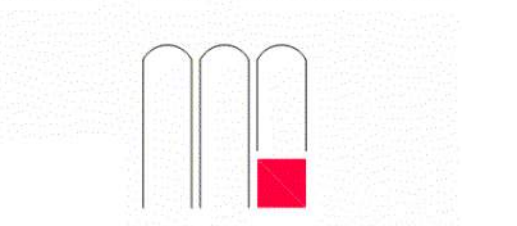
HAMPTON INN HOTEL GUESTROOM FLOOR SUMMARY

HAMPTON INN HOTEL BUILDING  
SQUARE FOOTAGE

FLOOR	AREA PER FLOOR SF
1ST FLOOR	15,800 SF
2ND FLOOR	15,200 SF
3RD FLOOR	15,200 SF
4TH FLOOR	15,200 SF
TOTAL	61,400 SF +/-

	NARROW BAY KING A	ACCESSIBLE STANDARD KING B - ROLL-IN	ACCESSIBLE STANDARD KING C - TUB	DOUBLE QUEEN EXTENDED D	DOUBLE QUEEN EXTENDED D ALT-1	DOUBLE QUEEN EXTENDED D ALT-2	DOUBLE QUEEN EXTENDED WIDE D ALT-3	ACCESSIBLE DOUBLE QUEEN E - ROLL-IN	ACCESSIBLE DOUBLE QUEEN F - TUB	TOTAL
1ST FLOOR	11	1	0	1	0	0	0	1	0	15
2ND FLOOR	13	1	0	1	7	3	7	1	0	34
3RD FLOOR	13	1	0	1	7	3	7	1	0	34
4TH FLOOR	13	1	0	1	7	3	7	1	0	34
TOTAL	50	4	1	3	22	9	21	4	1	117

NOTE: PROPOSED ROOM MATRIX IS SUBJECT TO CHANGE



SEAL:

CONCEPTUAL DRAWING  
NOT FOR CONSTRUCTION

This drawing and all prints of it are the property of Mayse & Associates, Inc. Reproductions of these drawings without the written consent of Mayse & Associates, Inc. is not permitted and Mayse & Associates, Inc. retains all common law and statutory and other reserved rights, including the copyright.

Engineer

Hampton Inn  
Roseville, CA

251 Conference Center Drive  
Roseville, CA 95678

INSIGNIA  
Where Hospitality Begins

Insignia Hospitality Group, Inc.  
401 TRADEWINDS  
MIDLAND, TEXAS 79706

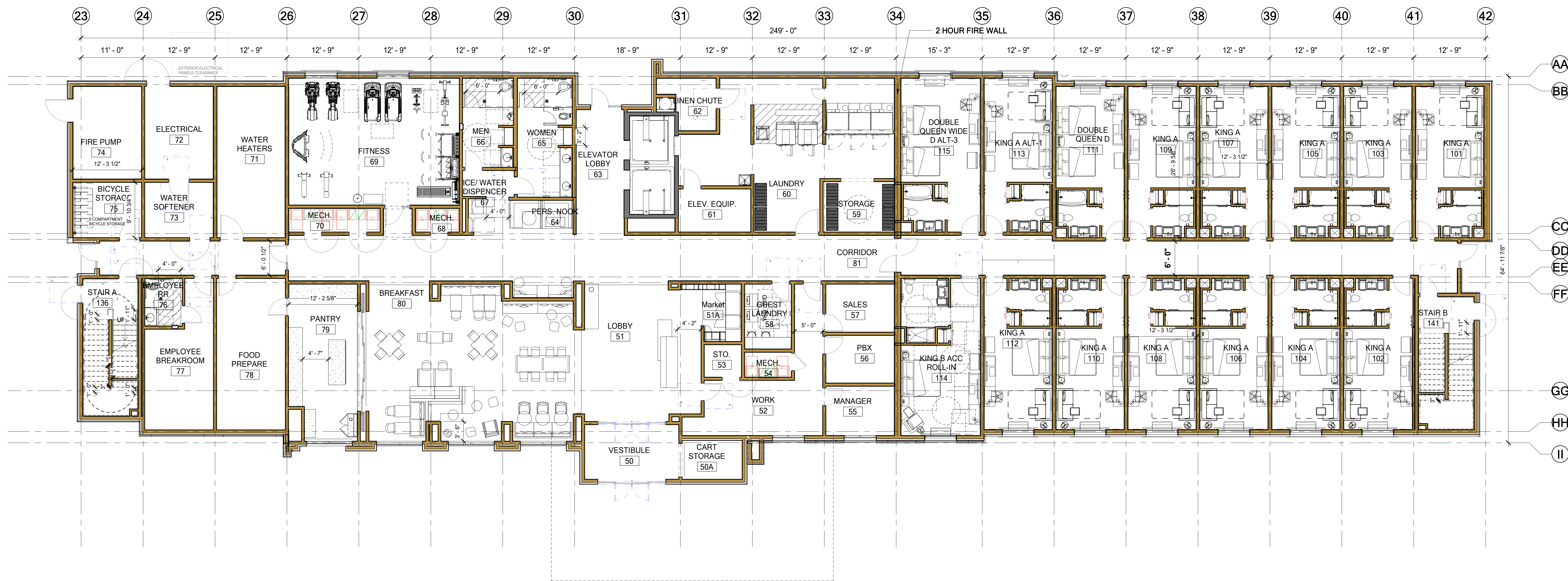
Revisions:

date 06/16/2023

job no. 19027

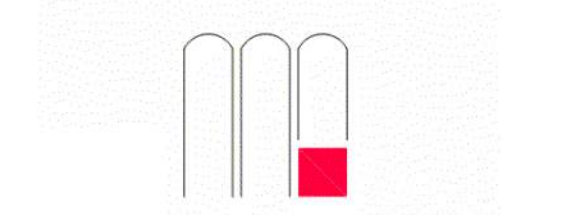
sheet title  
FIRST FLOOR PLAN -  
HAMPTON INN

A001H



1 FLOOR PLAN - LEVEL 1

A001H 1/8" = 1'-0"



SEAL:

CONCEPTUAL DRAWING  
NOT FOR CONSTRUCTION

This drawing and all prints of it are the property of Mayse & Associates, Inc. Reproductions of these drawings without the written consent of Mayse & Associates, Inc. is not permitted and Mayse & Associates, Inc. retains all common law and statutory and other reserved rights, including the copyright.

Engineer

Hampton Inn  
Roseville, CA

251 Conference Center Drive  
Roseville, CA 95678

INSIGNIA  
Where Hospitality Begins

Insignia Hospitality Group, Inc.  
401 TRADEWINDS  
MIDLAND, TEXAS 79706

Revisions:

date 06/16/2023

job no. 19027

sheet title  
TYPICAL GUESTROOM FLOOR  
PLAN - HAMPTON INN

A002H

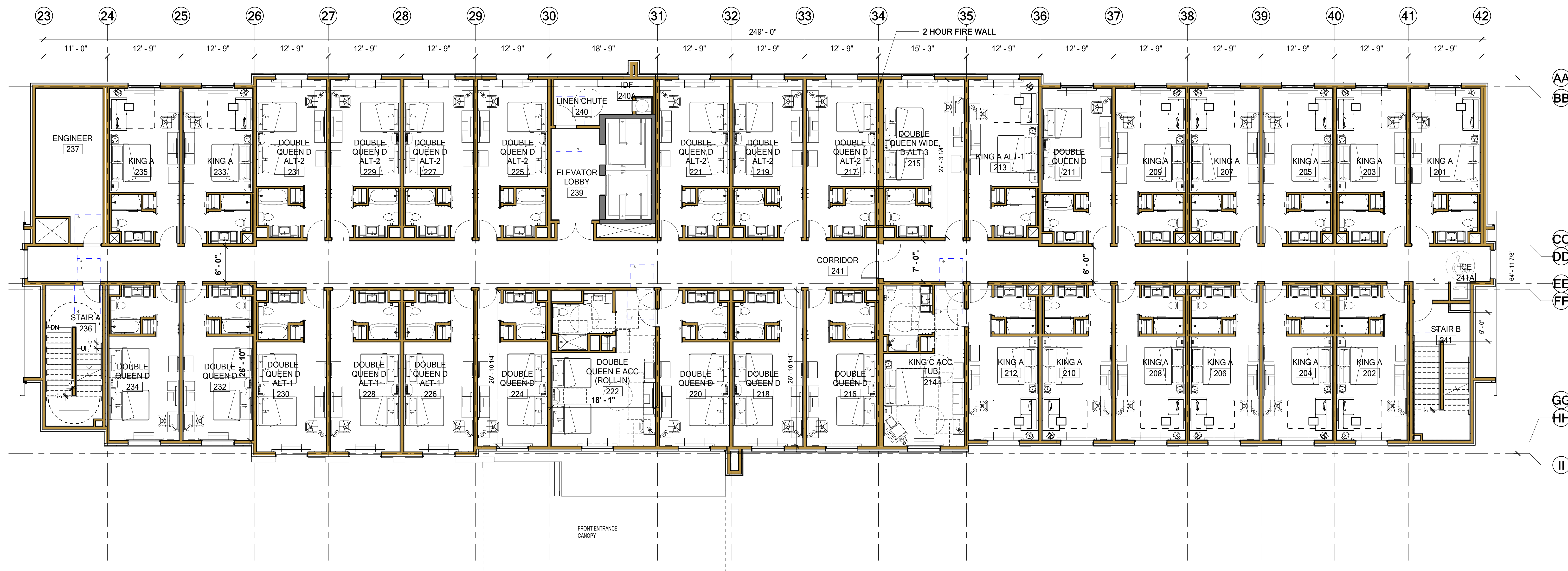
HAMPTON INN HOTEL BUILDING  
SQUARE FOOTAGE

FLOOR	AREA PER FLOOR SF
1ST FLOOR	15,800 SF
2ND FLOOR	15,200 SF
3RD FLOOR	15,200 SF
4TH FLOOR	15,200 SF
TOTAL	61,400 SF +/-

HAMPTON INN HOTEL GUESTROOM FLOOR SUMMARY

	NARROW BAY KING A	NARROW BAY KING ALT-1	ACCESSIBLE STANDARD KING B - ROLL-IN	ACCESSIBLE STANDARD KING C - TUB	DOUBLE QUEEN EXTENDED D	DOUBLE QUEEN EXTENDED D ALT-1	DOUBLE QUEEN EXTENDED D ALT-2	DOUBLE QUEEN EXTENDED WIDE D ALT-3	ACCESSIBLE DOUBLE QUEEN E - ROLL-IN	ACCESSIBLE DOUBLE QUEEN F - TUB	TOTAL
1ST FLOOR	11	1	0	1	0	0	0	1	0	0	15
2ND FLOOR	13	1	0	1	7	3	7	1	1	0	34
3RD FLOOR	13	1	0	1	7	3	7	1	1	0	34
4TH FLOOR	13	1	0	1	7	3	7	1	1	0	34
TOTAL	50	4	1	3	22	9	21	4	1	2	117

NOTE: PROPOSED ROOM MATRIX IS SUBJECT TO CHANGE



1 FLOOR PLAN - LEVEL 2-4

A002H 1/8" = 1'-0"